

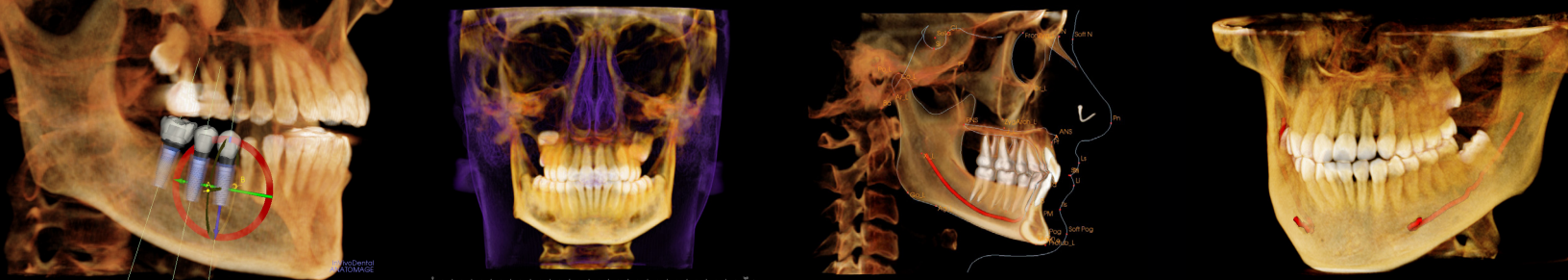
i-CAT[®] FLX



Advancing i-CAT's Award-Winning Cone Beam 3D Solution

IMPLANT : ORTHO : SURGICAL : AIRWAY : TMJ : SLEEP





3D imaging at a dose lower than a 2D Panoramic X-ray with QuickScan+*

i-CAT® FLX



Introducing the new i-CAT® FLX Cone Beam 3D system, designed to provide greater flexibility in scanning, planning, and treatment. This latest advancement of our award-winning technology offers a range of innovative features that deliver increased clarity, ease-of-use, and control.

- Full dentition 3D imaging at a dose lower than a 2D Panoramic X-ray with **QuickScan+**
- **Visual iQuity™** advanced image technology delivers i-CAT's clearest 3D and 2D images
- Easy-to-use, guided workflow with the **SmartScan STUDIO™** touchscreen interface
- Capture traditional 2D panoramic images with the **i-PAN™** feature
- **Ergonomic Stability System** to minimize patient movement and reduce the need for retakes

NEW!

SmartScan STUDIO

i-CAT's new SmartScan STUDIO™ provides an easy, customizable solution for a guided, controlled workflow in your practice. With its easy-to-use, touchscreen interface and integrated acquisition system, SmartScan STUDIO offers step-by-step guidance, allowing you to select the appropriate scan for your patient with an ALARA (As Low As Reasonably Achievable) radiation dose.





i-CAT provides the optimal balance between image quality and dose

Clinically Driven Image and Exposure Control

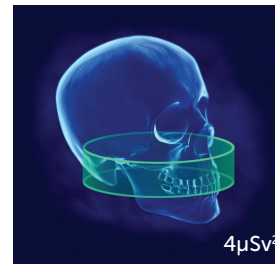
The i-CAT FLX offers the most flexible imaging control of any cone beam 3D unit*, allowing you to target the desired field-of-view on each patient while minimizing the radiation dose.

With i-CAT, you gain greater control over your workflow—and the scanning process. Customize scanning options for greater control of the field-of-view, dose, and resolution.

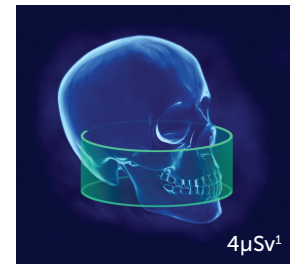
The all-new SmartScan STUDIO touchscreen workflow allows you to choose from preset scan protocols and even customize your own presets for simple and fast scanning.



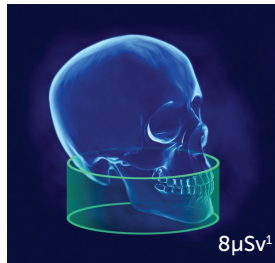
FOV 8 cm x 8 cm



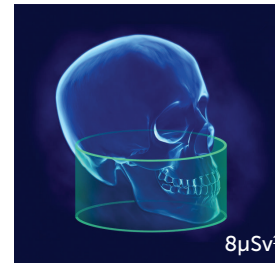
FOV 16 cm x 4 cm



FOV 16 cm x 6 cm
upper jaw TMJ



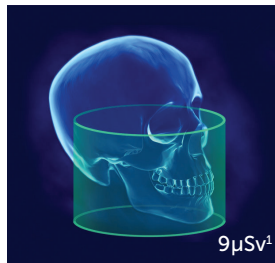
FOV 16 cm x 6 cm
lower jaw



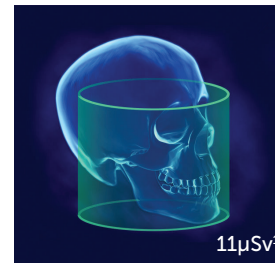
FOV 16 cm x 8 cm



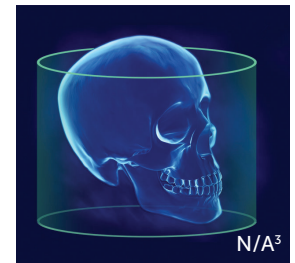
FOV 16 cm x 10 cm



FOV 16 cm x 11 cm



FOV 16 cm x 13 cm



FOV 23 cm x 17 cm

¹ Based on a study (not currently published) by John Ludlow, University of North Carolina, School of Dentistry, utilizing the i-CAT FLX QuickScan+ exposure protocol.

² Estimated dose measurements.

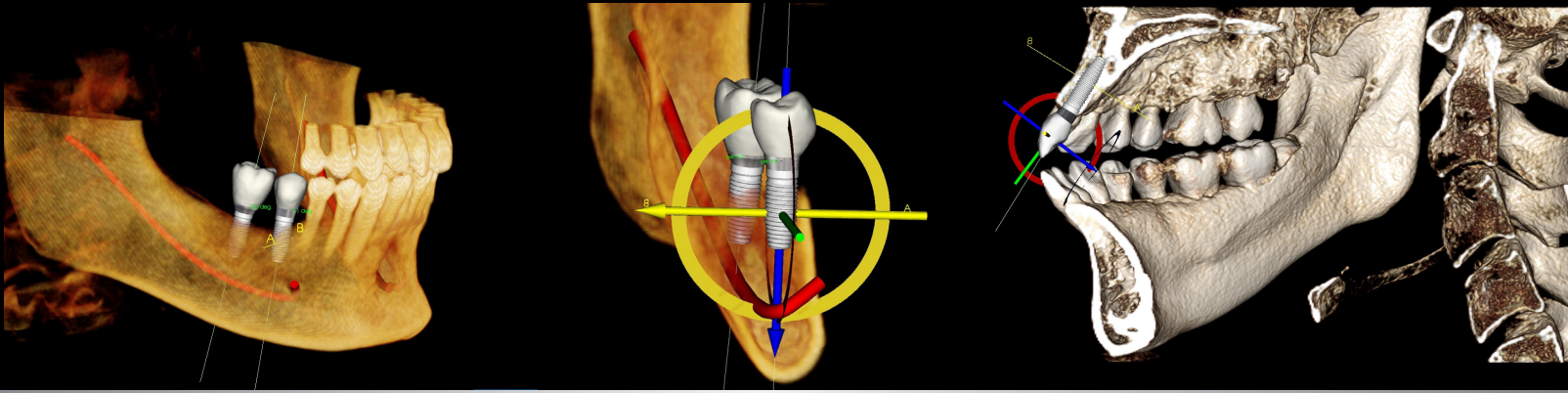
³ QuickScan+ protocol is not available on the extended-field-of-view scan.

*Based on the number of scan options currently available at time of printing.



Tx STUDIO

Tx STUDIO™ provides the power of multiple software systems combined into one simple-to-use solution. Designed with Anatomage, Tx STUDIO leverages the best in anatomy imaging software and cone beam 3D technology. It is the only software designed exclusively for i-CAT that enhances the efficiency of your practice by providing immediate access to integrated treatment tools for implant planning, surgical guides, and other applications.



The i-CAT Philosophy

SCAN

Clinical control and optimized patient care

With i-CAT, there's no need to compromise between image quality and patient safety. High-resolution, volumetric images provide complete 3D views for more thorough analysis of bone structure and tooth orientation, while flexible scanning options allow you to control the dose and follow ALARA (As Low As Reasonably Achievable) radiation protocols.

PLAN

Powerful, comprehensive treatment tools

More than just a scanner, i-CAT includes powerful, yet easy-to-use, planning and treatment tools to help you take charge of your practice. Designed to streamline your workflow, i-CAT helps you move from scanning to consultation and treatment planning in less than one minute.

TREAT

More advanced procedures with greater predictability

Start planning immediately and offer an effective course of treatment—from implants to surgical guides and restorations. i-CAT's open software architecture seamlessly integrates with orthodontic systems, CAD/CAM programs, imaging software, and practice management programs, expanding your practice's capabilities.

The most comprehensive 3D treatment solution, from the most trusted 3D imaging brand

Widely regarded as the industry standard in cone beam technology, i-CAT solutions have been installed in more than 3,000 sites around the world. To help you make the most of i-CAT, we offer highly specialized service and support through the i-CAT Network and continuing education through the 3D Imaging Institute, the only entity of its kind dedicated to helping dentists and specialists use the latest in cone beam technology.

i-CAT[®]

www.i-CAT.com | **P** 800.205.3570 | **F** 215.997.5665

Available exclusively through

HENRY SCHEIN[®]
DENTAL

X-ray imaging, including dental CBCT, provides a fast, non-invasive way of answering a number of clinical questions. Dental CBCT images provide three-dimensional (3D) information, rather than the two-dimensional (2D) information provided by a conventional X-ray image. This may help with the diagnosis, treatment planning, and evaluation of certain conditions. Dental CBCT should be performed only when necessary to provide clinical information that cannot be provided using other imaging modalities. Concerns about radiation exposure are greater for younger patients because they are more sensitive to radiation. For more information about the use, benefits, and risks of CBCT, visit info.i-CAT.com/risk-and-benefits-of-CBCT